

sage

Sage Estimating

Better estimates by every measure





Sage Estimating

Sage Estimating is powered by trade-specific cost databases, enabling you to turbo-charge takeoffs and final proposals. Input your own costs into a prebuilt database or choose a database prepopulated with costs. When your proposal is accepted, information flows automatically to Job Cost in Sage business management software, eliminating redundant tasks, data entry errors, and omissions.



Put your best bid forward.

A new day in construction has dawned.

It's tougher than ever out there. Margins are razor-thin. Schedules are ultra-aggressive. You compete against more firms on every bid. To win more work and ensure the profitability of every project, you have to build estimates with more speed and precision than ever before. One thing is certain: Yesterday's estimating methods will no longer cut it.

Sage Estimating provides a smarter, automated way to estimate. Takeoffs are faster. Final proposals are more professional. Plus it works in tandem with Sage business management software, so once a bid is accepted, information flows automatically to accounting and job cost. By eliminating redundant data-entry and error-prone processes, Sage Estimating helps projects run efficiently from initial estimate to project completion. Quite simply, it's better estimates by every measure.

“Without [Sage] Estimating, a recent estimate would have taken me a week because I would have had to do takeoffs and calculations. With this software, it took 20 minutes, and I was ready to publish it in a booklet for the stakeholders.”

Shane Peterson, estimator
Port of San Diego

Fast. Accurate. Integrated.

Speed comes easily. Sage Estimating eliminates the drudgery associated with complex calculations and manual, repetitive, and routine estimating tasks. Fire it up and the first thing you notice is the intuitive interface with familiar bid worksheets that make building estimates easy. You'll also find literally thousands of built-in report options. Before you know it, you'll be executing processes, pricing items, refining data, and taking off a project with ease and speed. As you finalize your proposal, you'll wonder to yourself, "How can a few entry points and a series of clicks accomplish what used to take me days?" That's the power of Sage Estimating. That's putting your best bid forward, faster.

Potent

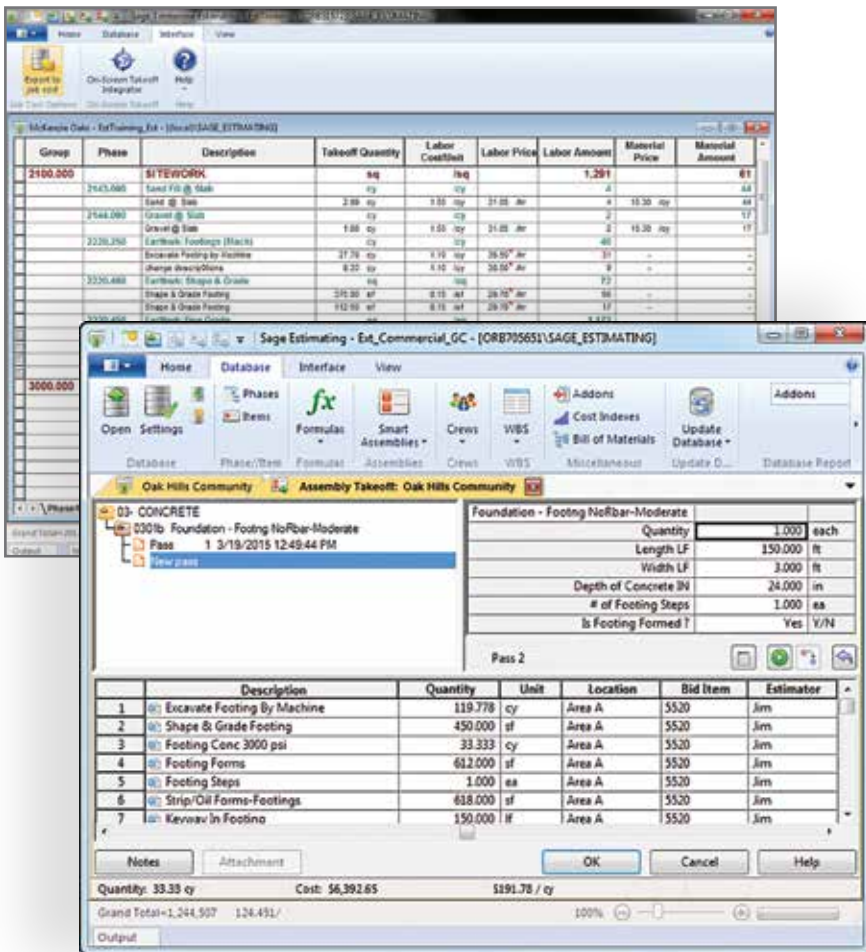
Takeoffs are turbo-charged. Choose from a variety of takeoff methods. Then simply pull individual or groups of items from a variety of industry-specific databases directly into your bid worksheet. Enter dimensions manually or use one of several electronic takeoff tools available for use with Sage Estimating. Don't blink, because quantities and prices are instantly tabulated.

Powerful

Sage Estimating is a welcome replacement for underpowered estimating solutions and generic spreadsheets. Under the hood, it's powered by a Microsoft SQL Server® database, which stores all your data in one place and processes it quickly. For starters, this means faster response time, better security, and more insightful reports.

Professional

Sage Estimating doesn't forget about style. The software makes it quick and easy to present reports and final proposals that are professional and well-organized. In other words, precisely what management and clients are looking for. Your professionalism will set your firm apart from the competition—and unlevel the playing field in your favor.



Five ways Sage Estimating makes you faster.

- Slashes takeoff time by 50% or more versus manual or generic spreadsheets methods
- Automates the process of cost item updates, eliminating the grind associated with pricing items manually
- Generates dimensions and takeoff quantities automatically using your choice of several integrated electronic takeoff solutions
- Provides a smart way to organize and report on estimates—with fast and easy access
- Shortens the learning curve by adapting to your preferred way of working

◀ Quickly and easily build estimates by taking off entire construction systems at once.



“With regular spreadsheet software, manual recalculation can lead to a catastrophic error on an estimate. Our [Sage] Estimating solution provides us with safeguards against these costly mistakes.”

Todd Ahern, senior estimator
Rudolph and Sletten

Profitability with precision.

Make every bid a winner. The fate of every project hinges on the estimate. Bid high and your proposal will be ignored. Bid low or make a mistake and cost overruns will erode your profits or ruin your company’s reputation. Sage Estimating helps you find the sweet spot while ensuring precise calculations and costs across all aspects of your estimate: labor, supplies, subcontractor bids, materials, equipment, and even overhead and profit. When you think of Sage Estimating, one word ought to come to mind: bull’s-eye.

Accuracy

Your profitable project starts with takeoff. Several methods are available to fit your preferred style. Trade-specific databases, smart assemblies, and electronic plan takeoff support do the heavy lifting for you—guiding you through as the system calculates materials, equipment, and labor prices. Automation helps eliminate costly errors such as mistyped values, mistakenly deleted formulas, and misplaced decimals.

Flexibility

Do you lose your cool on bid day if you’re asked to proportionately slash the total estimate by 4%? With Sage Estimating, you can handle these kind of adjustments in a snap, on the fly, and with precision. Plus, you can easily review, modify, or undo adjustments or make side-by-side comparisons right on screen.

Uniformity

When you have multiple estimators, inconsistency can be an issue—particularly if each is using a different personalized spreadsheet. With Sage Estimating, estimators have flexibility in the way they work, but the methodology is predictably consistent, eliminating pricing variations between estimators that can easily result in eroded profits.




Timberline Use Only Page 1A
3/19/2015 1:42 PM

Variance Report
Oak Hills Community

Item	Description	Material Amount			Total Amount	
		Oak Hills Community	ABCO Industries	Variance	Oak Hills Community	ABCO Industries
3000.000 CONCRETE						
3110.100	Forms: Footings					
10	Footings Forms	236	179	57	412	313
20	Stakes At Forms					
40	Footings Steps					
50	Keyway in Footings	510		510	730	
	Forms: Footings	746	178	667	1,142	313
3111.460	Forms: Soreeds					
10	Screeds	272	247	25	932	847
	Forms: Soreeds	272	247	26	832	847
3210.160	Rebar: Footings					
36	Footings Rebar #3	43		43	82	
56	Footings Rebar #5	467		467	896	
	Rebar: Footings	609		609	978	
3220.100	Rebar: Wiremesh Lump Sum					
sw30	WMM Sheets 6x8 10'x10'	972	834	33	1,693	1,544
	Rebar: Wiremesh Lump Sum	972	834	33	1,693	1,644
3300.810	Miso: Set Grade Pins					
10	Set Grade Pins at Footings	132		132	242	
	Miso: Set Grade Pins	132		132	242	
3310.140	Conc: Footings					
c 30	Footings Conc 3000 psi	2,493		2,493	2,900	
	Conc: Footings	2,493		2,493	2,900	
3310.210	Conc: Slabs On Grade					
c 30	S.O.G. Conc 3000 psi	10,338	9,442	944	11,236	10,213
	Conc: Slabs On Grade	10,338	9,442	844	11,236	10,213
3360.100	Finish: General					
10	Trowel Finish	63	62	6	5,563	5,062
	Finish: General	63	62	8	6,683	6,082
3360.300	Finish: Protect & Cure					
10	CS 309 Curing Compound	272	247	25	822	747
	Finish: Protect & Cure	272	247	26	822	747

Five ways Sage Estimating improves accuracy.

- Uses up-to-date, trade-specific cost databases for final numbers you can trust
 - Eliminates manual calculations and reduces the risk of overlooked items—some of the most common causes of errors
 - Enables you to make last-minute changes with quick precision
 - Standardizes the bid process across multiple estimators without forfeiting individual styles and flexibility
 - Removes spreadsheet liabilities—such as hidden cells and broken formulas
- ◀ Compare estimates side by side either onscreen or from a printed report.



“By using [Sage] Estimating, we have cut the costs involved in generating a complex estimate by 50% and increased the efficiency of the estimating process by at least 75%.”

Chris Rowe, president
Echo Pacific Construction

Get projects on the fast track

Connect estimating with the rest of your business. The ability to ensure continuity of your projects from initial estimate to project completion sets Sage Estimating apart from other estimating software. It works in tandem with accounting and operations management software from Sage to establish a seamless connection among everyone who works on a project—from estimators and project managers to accountants. The results? You spend less time moving information around and more time ensuring your projects and your overall business are moving smartly ahead.

Connectivity

When a bid is won and project responsibility shifts hands, is the transition smooth? Does information need to be rekeyed? With the integration between Sage Estimating and your accounting software, the appropriate data feeds from estimating to accounting for job cost reporting. No data loss. No redundant entry. Nothing left to chance.

Continuity

By aligning estimating with operations, Sage Estimating keeps all team members on the same page, looking at the most current data. This helps everyone make well-informed decisions and move projects through the lifecycle from start to finish, ensuring project profitability.

Confidence

With a complete view of the business close at hand, including historical data from accounting, estimating, and job cost tracking, you can considerably improve your estimating accuracy as well as win/loss ratios. In addition, the ability to compare estimated versus actual costs in a real-time scenario can help you make quicker, well-informed decisions, keeping your projects on track and profitable.



Group	Phase	Description	Takeoff Quantity	Labor Coefficient	Labor Price	Labor Amount	Material Price	Material Amount
2100.000		SITWORK				1,291		61
2100.000		Land Fill @ 100k	0.00	0.00	0.00	0.00	0.00	0.00
2100.000		Gravel @ 100k	2.00	1.00	21.00	42.00	15.00	30.00
2100.000		Gravel @ 50k	1.00	0.50	10.50	21.00	15.00	10.50
2200.250		Earthwork Footings (Mats)	0.00	0.00	0.00	0.00	0.00	0.00
2200.250		Excavate Footing by Machine	27.70	1.00	28.50	788.25	0.00	0.00
2200.250		Change Direction/Plane	0.22	1.00	28.50	6.17	0.00	0.00
2200.400		Earthwork Slopes & Grains	0.00	0.00	0.00	0.00	0.00	0.00
2200.400		Slopes & Grain Finishing	200.00	0.10	29.70	5,940.00	0.00	0.00
2200.400		Slopes & Grain Finishing	112.00	0.10	29.70	3,326.40	0.00	0.00
2200.400		Earthwork Form Grains	0.00	0.00	0.00	0.00	1,473	0.00
2200.400		Fine Grate	6,700.00	0.17	24.40	163,480.00	0.00	0.00
2200.400		Fine Grate Strips & Drives	30.00	0.27	29.70	891.00	0.00	0.00
2200.400		Fine Grate Strips & Drives	34.00	0.27	29.70	1,009.80	0.00	0.00
2200.400		Fine Grate Strips & Drives	0.00	0.27	29.70	0.00	0.00	0.00
3000.000		CONCRETE				19,833		85,024
3000.000		Formwork Footings	0.00	0.00	0.00	0.00	0.00	0.00
3000.000		Reinforce & Finishing	200.00	0.09	29.70	5,940.00	5.11	1,022.00
3000.000		Reinforce & Finishing	10.00	1.20	80.00	800.00	1.25	25.00
3000.000		Formwork Edgeform Slabs	0.00	0.00	0.00	0.00	3,465	850

Five ways Sage Estimating connects your entire business.

- Shares data across estimating, job cost, and accounting functions— with no data reentry
 - Smooths the transition from estimating to job cost, ensuring projects stay on track
 - Makes it easier to schedule, communicate, and confirm all project details across your team
 - Provides estimators access to historical “estimated vs. actual” figures, helping improve accuracy on future bids
 - Gives management fast access to cross-operational reports for informed decision making
- ◀ Share data between estimating, accounting, and job cost with no data reentry or associated errors.



The Sage customer experience.

We're here to help. From the moment Sage made its bold entry into the construction market over 40 years ago, we've been dedicated to helping construction companies operate more efficiently. But our heritage isn't only about software—it's about how we serve our customers. The Sage customer experience starts with our commitment to delivering personalized service and professionalism at every stage. It continues with world-class solutions and services as your business grows and changes. We respond to your needs and make your particular investment in our solutions easy, beneficial, and rewarding.



Local expertise

Our network of authorized business partners and certified consultants understands the challenges of the construction industry. Regionally based, these experienced professionals have helped thousands of construction companies get up and running quickly on Sage Estimating software—and they provide the ongoing service you need for continued success.

Responsive customer service

We back our solutions with comprehensive customer support, including regular maintenance software updates, 24x7 access to an online knowledgebase, and live technical support. Added peace of mind: 90% of our customers rate Sage Construction and Real Estate support an 8 or higher on a 10-point scale.

Flexible training

Sage and our business partners provide multiple training methods for convenience and affordability, including classroom, online instructor-led, online prerecorded Anytime Learning, web seminars, onsite or local training options, and an annual customer conference.

Professional services

Each business has different needs. Working with our business partners, Sage supports implementation, deployment, and custom development that will make Sage Estimating the perfect fit for your business. We bring extensive product and industry experience to each partnership.

Add-on solutions

Enhance or expand the power of Sage Estimating with add-on solutions including accounting, job cost reporting, prebuilt industry databases, and more.



Sage Construction and Real Estate
15195 NW Greenbrier Parkway
Beaverton, OR 97006

800-628-6583

www.SageCRE.com

© 2017, The Sage Group plc or its licensors. All rights reserved. Sage, Sage logos, and Sage product and service names mentioned herein are the trademarks of The Sage Group plc or its licensors. All other trademarks are the property of their respective owners.
03/23/2017